

## Marbella - Puerto Banus, Marbella

Luxury new development close to amenities

**Ref. 243692 6.200.000 €**



6



5



2.090 m<sup>2</sup>



1.071 m<sup>2</sup>



550 m<sup>2</sup>

Only 8 villas are built in a contemporary style with galleries and interior patios, in an exceptional urbanization with 24-hour security, a massive green zone and magnificent views. Each villa has 6 bedrooms, 5 bathrooms, 2 toilets, more than 2.000 m<sup>2</sup> plot, 1.026 m<sup>2</sup> enclosed area, 248 m<sup>2</sup> covered terraces, 299 m<sup>2</sup> uncovered terraces and 64 m<sup>2</sup> pool. Incredible roof terrace with hot tub and chill out area.

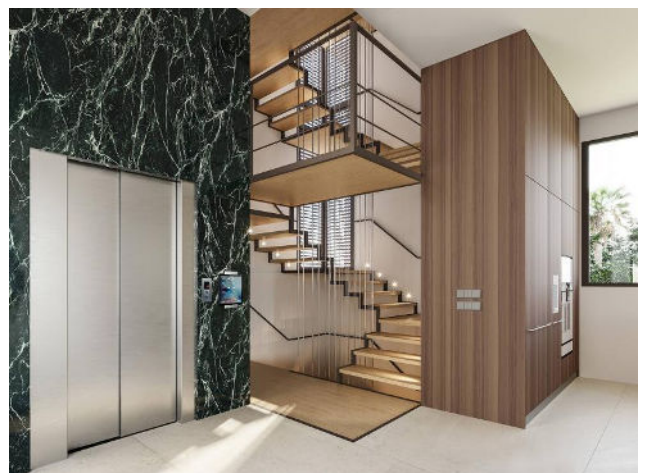
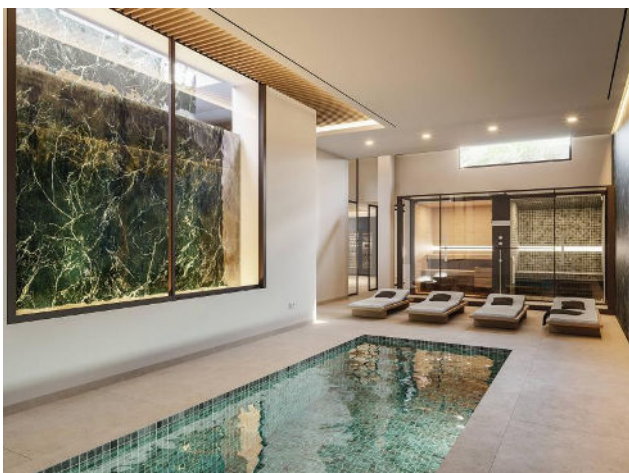
Intelligent home system. Almost all the appliances can be controlled from your smartphone or tablet. Your home will have elevator, private lift, 6 parking spaces, underfloor heating and you will have the choose between different interior options and personalized high quality finished.

Prices starts at 6.150.000€. Please contact us for more information.

**+34 711 079 817 - [www.verdinproperty.com](http://www.verdinproperty.com)**

*Sale price does not include costs or taxes. Additional costs for the buyer: inscription and notary fees, ITP 7% or, alternatively 10% VAT and AJD (1.2% on the purchase price) on new properties and subject to some requisites to be met. This info is subject to errors, omissions, modifications, prior sale or withdrawal from the market. Information sheet available, Decree 218/2005 Oct. 11th.*

Ref. 243692

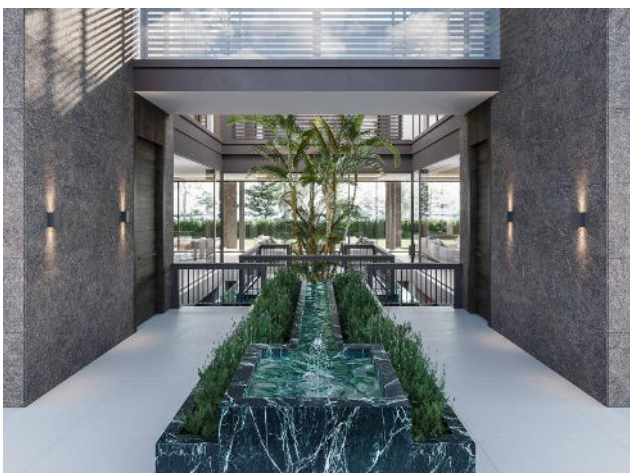


+34 711 079 817 - [www.verdinproperty.com](http://www.verdinproperty.com)

Sale price does not include costs or taxes. Additional costs for the buyer: inscription and notary fees, ITP 7% or, alternatively 10% VAT and AJD (1.2% on the purchase price) on new properties and subject to some requisites to be met. This info is subject to errors, omissions, modifications, prior sale or withdrawal from the market. Information sheet available, Decree 218/2005 Oct. 11th.



Ref. 243692





**Ref. 243692**

