



Monte Mayor, Benahavis

Villa in Monte Mayor with panoramic sea views

Ref. 398323 2.750.000 €



6



7



4.046 m²



932 m²

It is set in a natural environment, approximately 8 Km from the beach and 18 Km from Puerto Banus. It is located in an area considered to be one of the most luxurious in the Cosa del Sol. Stunning sea views, excellent location, established residential area, with security and in an incomparable natural environment.

With a southwest orientation, the contemporary style villa is endowed with ample spaces, has approximately 4.000 m² of plot and a constructed area of approximately 930 m².

It has 6 bedrooms distributed over two floors plus basement.

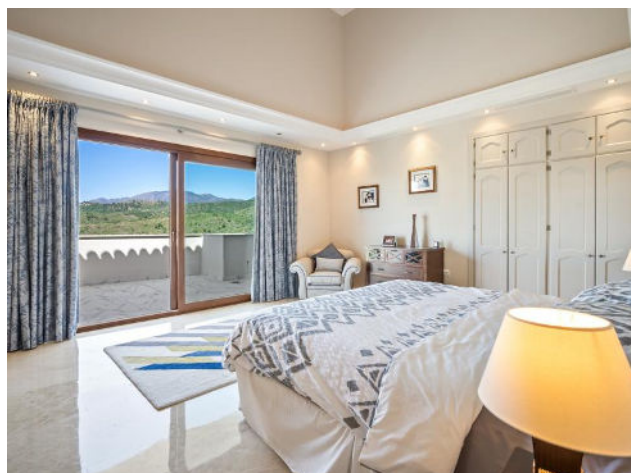
It enjoys panoramic views from the whole house. Marble floors, large fully fitted kitchen, the hall has double staircase and very high ceilings, basement with space for entertaining and a very flat plot which makes it ideal for sharing long days by the pool with friends and family.

It has large terraces and covered and semi-covered porches to delight the senses with wonderful views of the sea, the mountains and the surrounding area.

Garbage: 18 €/Year - IBI: 2.637 €/Year

Sale price does not include costs or taxes. Additional costs for the buyer: inscription and notary fees, ITP 7% or, alternatively 10% VAT and AJD (1.2% on the purchase price) on new properties and subject to some requisites to be met. This info is subject to errors, omissions, modifications, prior sale or withdrawal from the market. Information sheet available, Decree 218/2005 Oct. 11th.

Ref. 398323



Garbage: 18 €/Year - IBI: 2.637 €/Year

Sale price does not include costs or taxes. Additional costs for the buyer: inscription and notary fees, ITP 7% or, alternatively 10% VAT and AJD (1.2% on the purchase price) on new properties and subject to some requisites to be met. This info is subject to errors, omissions, modifications, prior sale or withdrawal from the market. Information sheet available, Decree 218/2005 Oct. 11th.

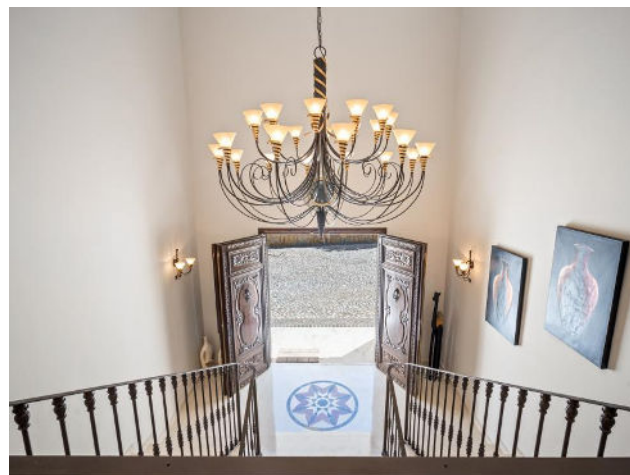
Ref. 398323



Ref. 398323



Ref. 398323



Ref. 398323

