



## Marbella - Puerto Banus, Marbella

Wonderful apartment in Puerto Banus

**Ref. 428032 2.950.000 €**



3



3



121 m<sup>2</sup>



21 m<sup>2</sup>

A sleek contemporary apartment located within the the famous Puerto Banus Marina, showcasing jetliner panoramic views to the Mediterranean Sea and harbour. Experience luxurious coastal living in Puerto Banus, with endless designer stores, avant-garde restaurants and luxury leisure activities to enjoy under the spectacular Marbella climate. Recently renovated with the highest qualities and complemented with refined contemporary design, each division has been maximised to its full potential and ensures that the distinguishable features are the magnificent panoramic sea and port views. Throughout the property discover top-of-the-line

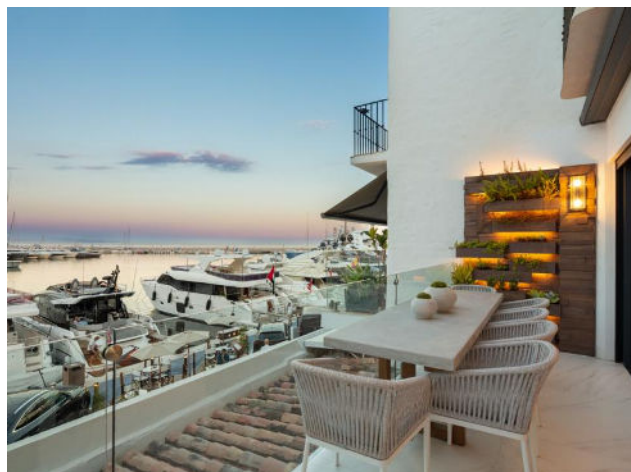
features such as an open plan living with almond wood panelling incorporated LED lighting, leading directly to the exterior terrace with frontline views towards the port, a sleek fitted kitchen complete with top-level Gaggenau appliances and 3 opulent bedrooms, each with their own en-suite bathrooms. Discover a lavish apartment with all the best Marbella has to offer at your fingertips.

**Garbage: 185 €/Year - IBI: 1.454 €/Year**

*Sale price does not include costs or taxes. Additional costs for the buyer: inscription and notary fees, ITP 7% or, alternatively 10% VAT and AJD (1.2% on the purchase price) on new properties and subject to some requisites to be met. This info is subject to errors, omissions, modifications, prior sale or withdrawal from the market. Information sheet available, Decree 218/2005 Oct. 11th.*

**[www.verdinproperty.com](http://www.verdinproperty.com)**

**Ref. 428032**



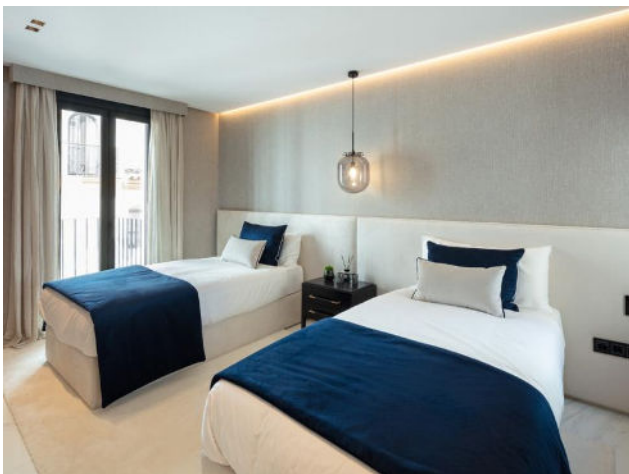
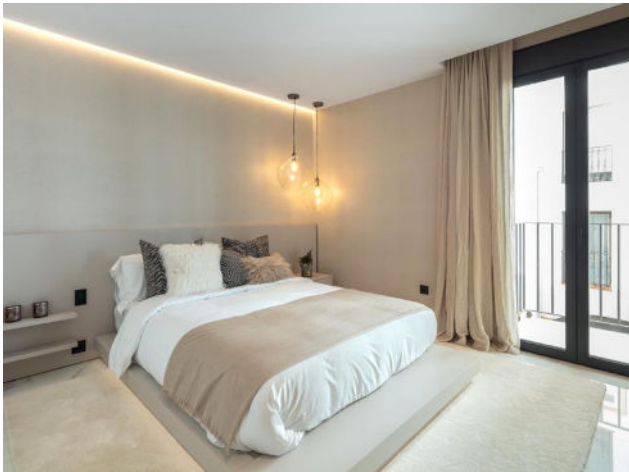
**Garbage: 185 €/Year - IBI: 1.454 €/Year**

Sale price does not include costs or taxes. Additional costs for the buyer: inscription and notary fees, ITP 7% or, alternatively 10% VAT and AJD (1.2% on the purchase price) on new properties and subject to some requisites to be met. This info is subject to errors, omissions, modifications, prior sale or withdrawal from the market. Information sheet available, Decree 218/2005 Oct. 11th.

**www.verdinproperty.com**



**Ref. 428032**



**Ref. 428032**

